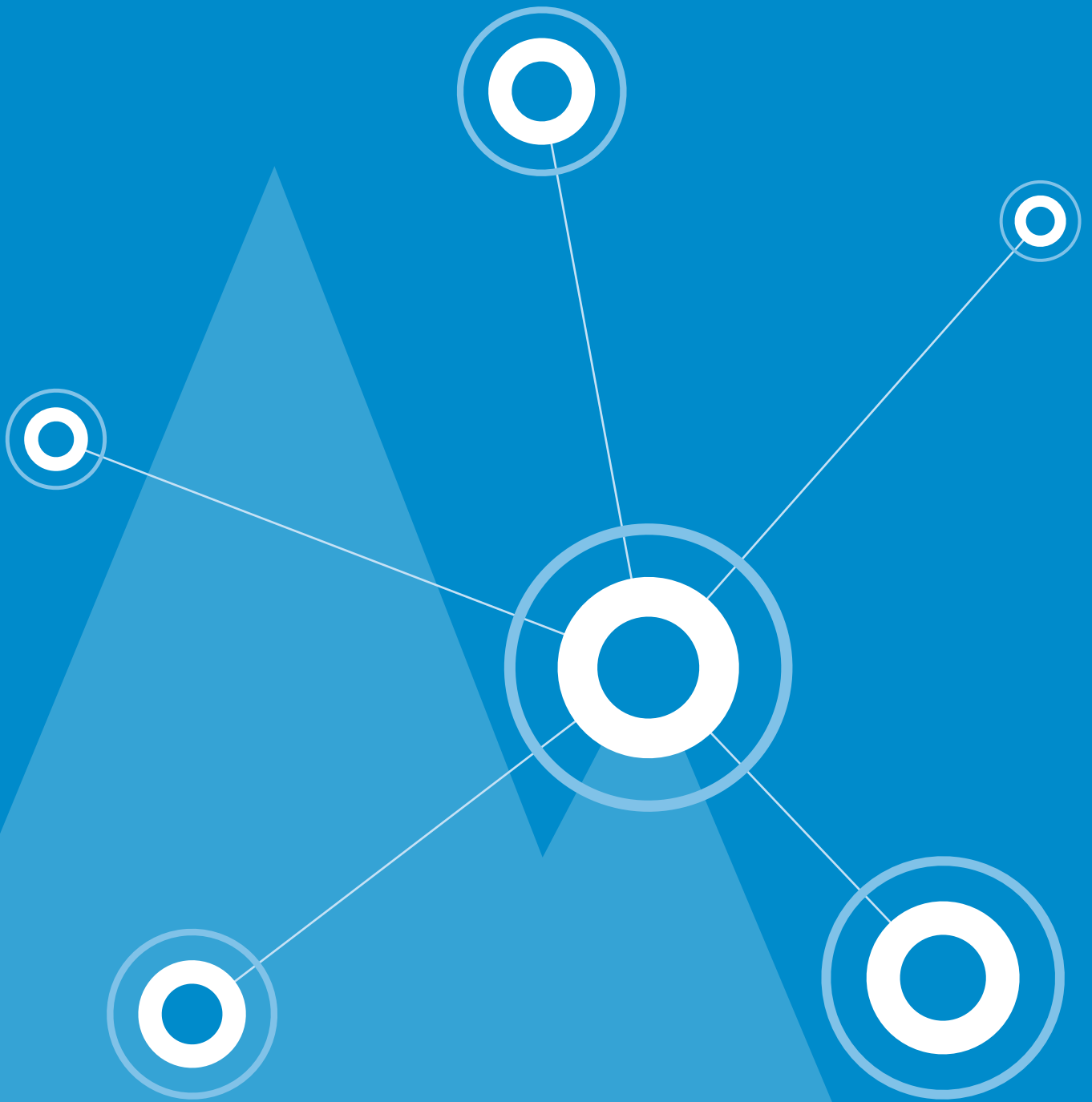




SNYPER-LTE

CONSISTENCY BUILT ON RELIABILITY

4G/LTE Cellular Signal Analyser



SNYPER-LTE

WHEN RELIABILITY AND
CONSISTENCY OF SIGNAL MATTERS

THE ASSURITY OF M2M CONNECTIONS HAS NEVER BEEN SO IMPORTANT

Reliability of M2M connection is a key question

More and more applications will require large bandwidth, high speed data capability over the cellular network.

LTE employs large bandwidths to deliver high speed, low latency traffic enabling rapid expansion of cellular M2M equipment. LTE supports IPV6 alongside IPV4 providing forward compatibility and rapid growth in deployment of Internet-of-Things (IoT) connected devices. While much attention is given to selecting the best infrastructure hardware, weak signal strength, reliability and resilience are often an afterthought.

CURRENT USER PROBLEMS:

- Unreliable connection
- Low bandwidth
- Poor signal resilience
- No ability to check signal direction or strength

"FOR MY APPLICATION I NEED:"

- More connections
- Higher available bandwidth
- Greater signal resilience
- Fit and forget connectivity

It means reliability of cellular connections has never been so important

SNYPER LTE is a key tool in optimising uptime and improving resilience of cellular connected systems, leveraging high quality-of-service levels for your applications.

SNYPER-LTE is the latest evolution in cellular signal analysis with backward compatibility to 3G and 2G networks. SNYPER-LTE is used by installers and systems integrators to minimise installation issues relating to signal strength, network selection and antenna evaluation.



ROBUST, CONSISTENT HOTSPOT AND SIGNAL DIRECTION DETERMINATION FOR 4G/LTE INSTALLATIONS WITH THE SNYPER-LTE

Your LTE installations work first time and keep working

With long life battery, in-car charger and advanced power saving modes, SNYPER-LTE is always ready to help diagnose faults and shed light on difficult to solve cellular connectivity problems. Just power-on, select Survey and detailed network data is available for 2G/3G and LTE along with relative signal strength and base station available nearby. Download survey results and export to HTML or CSV for reports or further analysis



BENEFITS AT A GLANCE

- Wideband 2G/3G/4G and Narrowband 2.6GHz/4G antenna included
- Antennas detachable for connection to installed antennas and in-situ testing
- Sunlight readable colour display
- Intuitive menu system – Access all features through easy to use menus
- Rugged, wipe clean enclosure
- Auto power down – Unit automatically powers off to extend battery life
- Quick download of survey results to PC with HTML/CSV view
- Professional, stylish design evolved from 2G/3G product generations
- 'Hot-spot' signal determination
- Strongest signal direction finding



SNYPER-LTE SPECTRUM

FOR APPLICATION ACROSS INDUSTRIES REQUIRING CONSISTENT 4G NETWORKS

Usage examples

Industrial, traffic management and infrastructure equipment is increasingly connected to the internet over mobile networks.

SNYPER-LTE is an invaluable tool used by installers, field service engineers and systems developers to ensure consistency of connection with new and deployed equipment ensuring maximum ROI.



Traffic management

Traffic signals, roadside signage and environmental monitoring all rely on cellular connectivity providing remote updates and pre-emptive fault management.



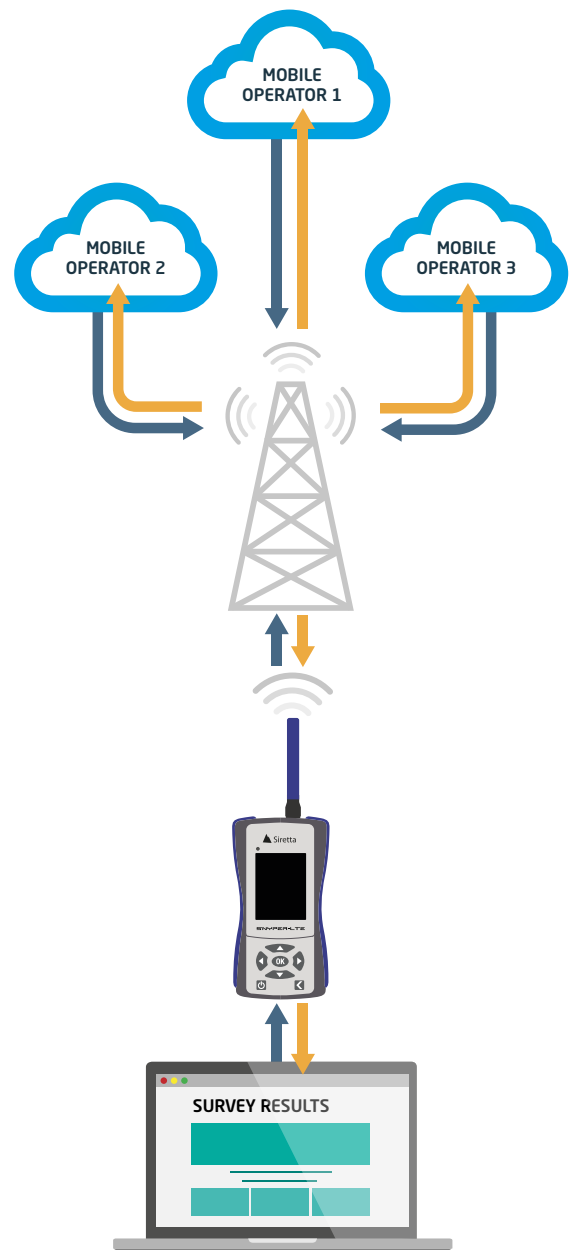
Security systems

IP cameras, door access and intrusion detection/monitoring systems rely on 4G connections for primary or backup connections.



Industrial

Remotely sensing liquid and gas tanks, along with other factors such as pressure and heat, boosts the efficiency in operating industrial systems.



SNYPER LTE FEATURES

MAIN FEATURES OF SNYPER-LTE

- 2G + 3G + 4G signal testing
- European coverage 800/850/900/1900/2100/2600 MHz
- Survey and store multiple surveys (Max 50 'SPECTRUM')
- Download surveys and data via USB to PC
- Present survey data in HTML graphically/CSV
- liveSCAN feature (Spectrum model)
 - Direction finding
 - Hotspot analysis
- Spectrum version includes liveSCAN antenna
- Large capacity battery for long battery life
- Rugged and durable design
- Multi language (coming soon)

ADDITIONAL FEATURES

- Large, easy to read colour display
- Display customisable
- Intuitive menuing
- Usable in light rain conditions
- Wipe clean keypad
- Auto power down extends battery life
- Operating temperature range -20 to +55 degrees C
- Battery: Lithium-Ion / Lithium-Polymer

COMPLETE WITH

- Multi-country power charger
- In-car charging adaptor
- 2 Antennas
 - Blue standard
 - Silver enhanced 2600MHz sensitivity
- USB cable for survey download
- Quick start guide
- Tough carrying case for the complete kit
- liveSCAN antenna and cable (SNYPER-LTE SPECTRUM)

SNYPER-LTE SPECTRUM

The SNYPER-LTE Spectrum comes complete with directional liveSCAN antenna and connecting RF cable. The liveSCAN antenna connects to the SNYPER via the RF cable and replaces the normal stubby antenna. The SNYPER with liveSCAN antenna connected enables the user to be able to 'point' the antenna with one hand and view the graphical display on the SNYPER with the other hand to pin-point direction from which the maximum signal is coming from, all in real time.



SNYPER-LTE Spectrum with liveSCAN antenna

SNYPER-LTE – THE PROFESSIONAL’S CHOICE FOR M2M RELIABILITY

SNYPER-LTE

The professional’s choice for analysis of 2G/3G/4G Networks, SNYPER-LTE includes: 2 detachable antennas, rugged carry case, USB cable, multi-region power supply and car charger.



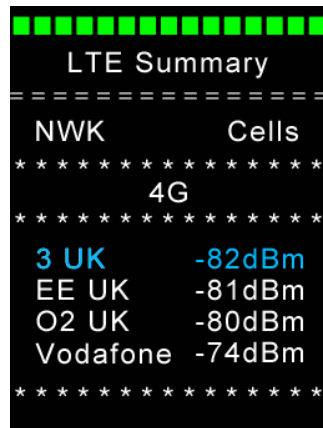
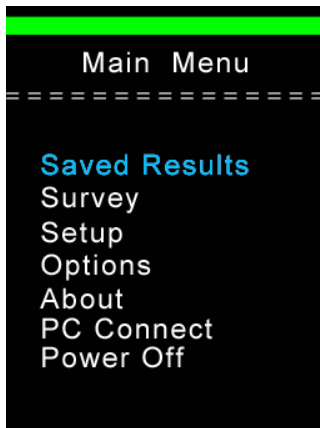
Handheld, easy to use



Detachable antenna



Carry case with multi-region power supply, USB car charger, PC download cable



SNYPER-LTE presents detailed survey results in easy to read format. View summary information for all networks or delve deeper for specific parameters. Stored surveys can be viewed, or download data to PC as HTML or CSV format.

SNYPER-LTE SPECTRUM including liveSCAN Antenna

SNYPER-LTE SPECTRUM further enhances the great features of SNYPER-LTE with more surveys stored, 'hot-spot' analysis and directional survey using liveSCAN antenna kit.





Siretta is a leading manufacturer of wireless M2M products and overall solutions, specialising in technology used as building blocks for the Internet-of-Things (IoT) landscape. Siretta's portfolio encompasses wireless modems, gateways and routers, remote monitoring and cloud services. To complete the wireless range Siretta has the widest range of antennas, cable assemblies and adaptors.

Siretta Ltd.

Basingstoke Road
Spencers Wood
Reading
RG7 1PW
United Kingdom

Tel: +44(0) 1189 769014
Fax: +44(0) 1189 769020
email: sales@siretta.co.uk
www.siretta.co.uk